

BLIND FLANGE series X



TECHNICAL CHARACTERISTICS

Flange end connections according to EN1092-2: PN10/PN16

Designed according to EN545

Maximum working pressure: PN16 / 16 bar

Working temperature: 0°C - +70°C

Color RAL5015

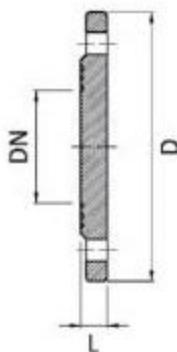
Powder epoxy coating 250 µm thickness

Body from ductile iron EN-GJS-500-7

WRAS approved epoxy coating,

ACS approved epoxy coating under request

DN	Flange drilling	D	L	Weight	BLUCAST ref. no.
50	PN10/16	165	19	2.4	X050
65	PN10/16	185	19	2.8	X065
80	PN10/16	200	19	3.5	X080
100	PN10/16	220	19	4.1	X100
150	PN10/16	285	19	8.1	X150
200	PN10	340	20	9	X200
250	PN10	400	22	18.7	X250
300	PN10	455	24.5	23.5	X300
400	PN10	565	24.5	41.1	X400
500	PN10	670	26.5	61.1	X500
600	PN10	780	30	94.1	X600



All illustrations, technical data, dimensions (in mm) and weights (all weights specified in kg) are non