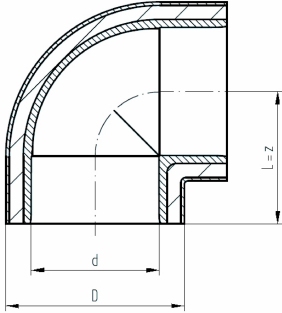


Elbow 90° pre-insulated ABS metric

Model:

- Insulation made from PUR
- Outer jacket impact resistant. Color: black
- Compact design

Connecting dimensions = Pipe outer diameter



d (mm)	D (mm)	PN (bar)	Code	SP	Weight (kg)	L (mm)	z (mm)	required Nipple	closest inch (inch)
160	250	10	738 101 117	1	2.600	166	166	738901617	6
200	280	10	738 101 119	1	5.003	207	207	738901619	8

The technical data are not binding. They neither constitute expressly warranted characteristics nor guaranteed properties nor a guaranteed durability. They are subject to modification. Our General Terms of Sale apply.

Georg Fischer Piping Systems Ltd, Postfach, CH-8201 Schaffhausen/Switzerland

Phone +41 -(0)52-631 1111

e-mail: info.ps@georgfischer.com

Internet: <http://www.gfps.com>