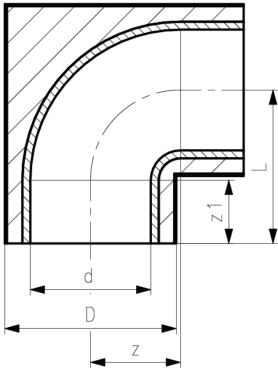


Bend 90° short pattern pre-insulated ABS metric

Model:

- Insulation made from PUR
- Outer jacket impact resistant. Color: black
- Compact design

Connecting dimensions = Pipe outer diameter



D (mm)	d (mm)	PN (bar)	Code	SP	Weight (kg)	z1 (mm)	z (mm)	closest inch (inch)	L (mm)
355	250	6	738 101 121	1	10.000	130	131	10	263
400	280	6	738 001 122	1	18.000	145	210	10	357
450	315	6	738 001 123	1	24.000	165	237	12	401

The technical data are not binding. They neither constitute expressly warranted characteristics nor guaranteed properties nor a guaranteed durability. They are subject to modification. Our General Terms of Sale apply.

Georg Fischer Piping Systems Ltd, Postfach, CH-8201 Schaffhausen/Switzerland

Phone +41 -(0)52-631 1111

e-mail: info.ps@georgfischer.com

Internet: <http://www.gfps.com>