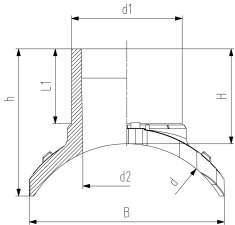




Branch saddle topload outlet 160 - 225 mm

- PE 100 SDR 11 (ISO S5)
- 5 bar Gas / 10 bar Water
- Branch Saddle installation only with installation set Topload TL225 (799.300.807)
- Angle adaptors (799.350.340) for fusion cable required
- 4 mm pin connectors
- Limited path fusion indicators
- Spigot outlet for butt- and electrofusion
- Full pressure applicable - no derating factor



d (mm)	d1 (mm)	Code	SP	GP	Weight (kg)	h (mm)	H (mm)	L (mm)	L1 (mm)	B (mm)	d2 (mm)
315	160	193 135 402	1	1	2.662	212	137	322	110	282	131
315	225	193 135 404	1	1	4.594	306	160	366	127	260	184
355	160	193 135 412	1	1	2.662	206	137	322	110	282	131
355	225	193 135 414	1	1	4.710	319	160	366	127	249	184
400	160	193 135 422	1	1	2.678	198	137	322	110	300	131
400	225	193 135 424	1	1	4.700	329	160	366	127	241	184
450	160	193 135 432	1	1	2.678	194	137	322	110	300	131
450	225	193 135 434	1	1	4.700	329	160	366	127	233	184
500	160	193 135 442	1	1	2.708	186	137	322	110	310	131
500	225	193 135 444	1	1	4.650	344	160	366	127	226	184
560	160	193 135 452	1	1	2.708	183	137	322	110	310	131
560	225	193 135 454	1	1	4.650	344	160	366	127	220	184
630	160	193 135 462	1	1	2.500	177	137	322	110	312	131
630	225	193 135 464	1	1	4.630	353	160	366	127	214	184
710	160	193 135 472	1	1	2.500	172	137	322	110	312	131
710	225	193 135 474	1	1	4.630	352	160	366	127	208	184
800	160	193 135 482	1	1	2.500	168	137	322	110	312	131
800	225	193 135 484	1	1	4.610	359	160	366	127	203	184
900	225	193 135 494	1	1	4.610	359	160	366	127	199	184
1000	225	193 135 504	1	1	4.610	359	160	366	127	195	184

The technical data are not binding. They neither constitute expressly warranted characteristics nor guaranteed properties nor a guaranteed durability. They are subject to modification. Our General Terms of Sale apply.

Georg Fischer Piping Systems Ltd, Postfach, CH-8201 Schaffhausen/Switzerland

Phone +41 -(0)52-631 1111

e-mail: info.ps@georgfischer.com

Internet: <http://www.gfps.com>