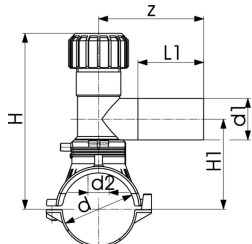




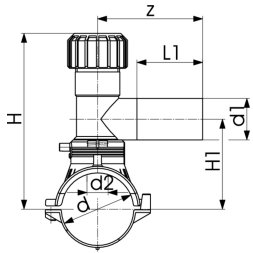
## Tapping saddle With 360° rotatable outlet

- PE 100 SDR 11 (ISO S5)
- 10 bar Gas / 16 bar Water
- With integrated cutter to tap live mains under pressure
- Complete with lower part
- 4 mm pin connectors
- Limited path fusion indicators
- Long fusion outlet
- O-ring-sealed screw cap
- d315-400mm: restricted application for pipes d355 and d400mm. Not suitable for pipes if wall thickness is larger than SDR17 pipes.
- \*moulded-on lower clamp
- \*\*Delivery without lower part for assembling as Top Load with tool no. 799.350.475; angle adaptor (799.350.340) for fusion cable required



L = length / Länge

	d	d1	Code	SP	Weight	d2	H	H1	L	L1	z
	(mm)	(mm)			(kg)	(mm)	(mm)	(mm)	(mm)	(mm)	(mm)
	63	20	193 131 402	1	0.697	32	186	108	165	71	130
	63	25	193 131 403	1	0.637	32	186	108	165	71	130
	63	32	193 131 404	1	0.701	32	186	108	165	76	130
	63	40	193 131 405	1	0.718	32	186	108	165	81	137
	63	63	193 131 437	1	1.426	32	134	112	165	100	160
	75	20	193 131 442	1	0.831	32	191	113	165	71	130
	75	25	193 131 443	1	0.830	32	191	113	165	71	130
	75	32	193 131 444	1	0.812	32	191	113	165	76	130
	75	40	193 131 445	1	0.849	32	191	113	165	81	137
	75	63	193 131 447	1	1.549	32	240	118	165	100	160
	90	20	193 131 452	1	0.794	32	199	121	165	71	130
	90	25	193 131 453	1	0.790	32	199	121	165	71	130
	90	32	193 131 454	1	0.770	32	199	121	165	76	130
	90	40	193 131 455	1	0.811	32	199	121	165	81	137
	90	63	193 131 457	1	1.494	32	248	126	165	100	160
*	110	20	193 131 462	1	0.826	32	209	131	182	71	130
*	110	25	193 131 463	1	0.808	32	209	131	182	71	130
*	110	32	193 131 464	1	0.831	32	209	131	182	76	130
*	110	40	193 131 465	1	0.805	32	209	131	182	81	137
*	110	63	193 131 467	1	1.097	35	258	136	182	100	160
	125	20	193 131 472	1	0.880	32	216	138	165	71	130
	125	25	193 131 473	1	0.878	32	216	138	165	71	130
	125	32	193 131 474	1	0.878	32	216	138	165	76	130
	125	40	193 131 475	1	0.874	32	216	138	165	81	137
	125	63	193 131 477	1	1.184	35	265	143	165	100	160
	140	20	193 131 482	1	0.887	32	233	146	165	71	130
	140	25	193 131 483	1	0.874	32	233	146	165	71	130
	140	32	193 131 484	1	0.894	32	233	146	165	76	130
	140	40	193 131 485	1	0.920	32	233	146	165	81	137
	140	63	193 131 487	1	1.180	35	273	151	165	100	160
*	160	20	193 131 492	1	0.916	32	243	156	182	71	130
*	160	25	193 131 493	1	0.912	32	243	156	182	71	130
*	160	32	193 131 494	1	0.915	32	243	156	182	76	130
*	160	40	193 131 495	1	0.936	32	243	156	182	81	137
*	160	63	193 131 497	1	1.221	35	283	161	182	100	160
	180	20	193 131 502	1	0.994	32	244	166	165	71	130
	180	25	193 131 503	1	1.001	32	244	166	165	71	130
	180	32	193 131 504	1	0.957	32	244	166	165	76	130
	180	40	193 131 505	1	1.007	32	244	166	165	81	137
	180	63	193 131 507	1	1.587	35	293	171	165	100	160
	200	20	193 131 512	1	1.015	32	254	176	165	71	130
	200	40	193 131 515	1	1.024	32	254	176	165	81	137
	200	32	193 131 514	1	0.985	32	254	176	165	76	130
	200	25	193 131 513	1	1.015	32	254	176	165	71	130



L = length / Länge

d	d1	Code	SP	Weight	d2	H	H1	L	L1	z	
(mm)	(mm)			(kg)	(mm)	(mm)	(mm)	(mm)	(mm)	(mm)	
200	63	<b>193 131 517</b>	1	1.745	35	303	181	165	100	160	
225	20	<b>193 131 522</b>	1	1.016	32	266	188	165	71	130	
225	25	<b>193 131 523</b>	1	1.025	32	266	188	165	71	130	
225	32	<b>193 131 524</b>	1	1.019	32	266	188	165	76	130	
225	40	<b>193 131 525</b>	1	1.029	32	266	188	165	81	137	
225	63	<b>193 131 527</b>	1	1.738	35	315	193	165	100	160	
250	20	<b>193 131 532</b>	1	1.025	32	279	201	165	76	130	
250	25	<b>193 131 533</b>	1	1.026	32	279	201	165	76	130	
250	32	<b>193 131 534</b>	1	0.996	32	279	201	165	76	130	
250	40	<b>193 131 535</b>	1	1.008	32	279	201	165	81	137	
250	63	<b>193 131 537</b>	1	1.733	35	328	206	165	100	160	
**	280	63	<b>193 131 547</b>	1	1.478	35	328	206	165	100	160
**	315-355	63	<b>193 131 557</b>	1	1.481	35	328	206	165	100	160
**	400	63	<b>193 131 577</b>	1	1.473	35	328	206	165	100	160

The technical data are not binding. They neither constitute expressly warranted characteristics nor guaranteed properties nor a guaranteed durability. They are subject to modification. Our General Terms of Sale apply.

Georg Fischer Piping Systems Ltd, Postfach, CH-8201 Schaffhausen/Switzerland

Phone +41 -(0)52-631 1111

e-mail: [info.ps@georgfischer.com](mailto:info.ps@georgfischer.com)

Internet: <http://www.gfps.com>