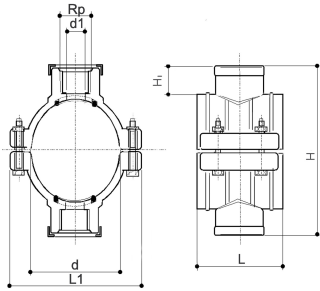




664 - Double blue clamp saddles with stainless steel reinforcing ring, flat gasket and galvanized bolts and nuts (PN16-PN10)

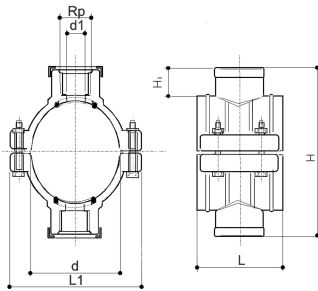
- female thread: ISO 7 (parallel)
- material: PP
- gasket: O-ring with flat lip (NBR)
- reinforcement ring: stainless steel AISI430
- bolts and nuts : galvanized
- colour: blue
- B= N° of bolts
- M= bolt type
- (*) with O-ring gasket
- water PN16-10
- suitable for PE and PVC pipes



	d (mm)	Rp (inch)	PN (bar)	B	M	Code	SP	GP	Weight (kg)
*	20	½	16	2	M8X40	158 001 125	1	30	0.147
*	25	½	16	2	M8X30	158 001 126	1	30	0.123
*	25	¾	16	2	M8X30	158 001 127	1	30	0.135
*	32	½	16	2	M8X30	158 001 128	1	30	0.116
*	32	¾	16	2	M8X30	158 001 129	1	30	0.128
*	32	1	16	2	M8X50	158 001 130	1	30	0.185
	40	½	16	2	M8X50	158 001 131	1	30	0.157
	40	¾	16	2	M8X50	158 001 132	1	30	0.168
	40	1	16	2	M8X50	158 001 133	1	30	0.204
	50	½	16	4	M8X50	158 001 134	1	30	0.225
	50	¾	16	4	M8X50	158 001 135	1	30	0.239
	50	1	16	4	M8X50	158 001 136	1	30	0.245
	50	1 ¼	16	4	M8X50	158 001 137	1	30	0.248
	63	½	16	4	M8X50	158 001 138	1	30	0.254
	63	¾	16	4	M8X50	158 001 139	1	30	0.262
	63	1	16	4	M8X50	158 001 140	1	30	0.268
	63	1 ¼	16	4	M8X50	158 001 142	1	30	0.366
	63	1 ½	16	4	M8X50	158 001 141	1	30	0.352
	75	½	16	4	M8X70	158 001 143	1	20	0.386
	75	¾	16	4	M8X70	158 001 144	1	20	0.394
	75	1	16	4	M8X70	158 001 145	1	20	0.412
	75	1 ¼	16	4	M8X70	158 001 147	1	20	0.461
	75	1 ½	16	4	M8X70	158 001 146	1	20	0.501
	75	2	16	4	M8X70	158 001 148	1	20	0.485
	90	½	16	4	M8X70	158 001 149	1	15	0.420
	90	¾	16	4	M8X70	158 001 150	1	15	0.458
	90	1	16	4	M8X70	158 001 151	1	15	0.456
	90	1 ¼	16	4	M8X70	158 001 153	1	15	0.516
	90	1 ½	16	4	M8X70	158 001 152	1	15	0.530
	90	2	16	4	M8X70	158 001 154	1	15	0.578
	110	½	16	6	M8X70	158 001 155	1	5	0.570
	110	¾	16	6	M8X70	158 001 156	1	5	0.596
	110	1	16	6	M8X70	158 001 157	1	5	0.616
	110	1 ¼	16	6	M8X70	158 001 159	1	5	0.680
	110	1 ½	16	6	M8X70	158 001 158	1	5	0.672
	110	2	16	6	M8X70	158 001 160	1	5	0.690
	110	3	6	6	M8X70	158 001 161	1	4	1.362
	125	½	16	6	M8X70	158 001 162	1	5	0.642
	125	¾	16	6	M8X70	158 001 163	1	5	0.638
	125	1	16	6	M8X70	158 001 164	1	5	0.649
	125	1 ¼	16	6	M8X70	158 001 166	1	5	0.744
	125	1 ½	16	6	M8X70	158 001 165	1	5	0.730
	125	2	16	6	M8X70	158 001 167	1	5	0.766
	125	3	6	6	M8X70	158 001 168	4	4	1.210
	125	4	6	6	M8X70	158 001 169	1	4	1.322
	140	½	16	6	M8X70	158 001 170	1	9	0.850

Data sheet

valid from: 10/9/17

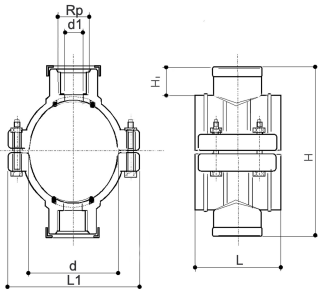


d (mm)	Rp (inch)	PN (bar)	B	M	Code	SP	GP	Weight (kg)
140	¾	16	6	M8X70	158 001 171	1	9	0.894
140	1	16	6	M8X70	158 001 172	1	9	0.873
140	1 ¼	16	6	M8X70	158 001 174	1	9	0.968
140	1 ½	16	6	M8X70	158 001 173	1	9	0.992
140	2	16	6	M8X70	158 001 175	1	9	0.995
140	3	10	6	M8X70	158 001 176	1	3	1.326
140	4	10	6	M8X70	158 001 177	1	3	1.454
160	½	16	6	M8X70	158 001 178	1	9	0.928
160	¾	16	6	M8X70	158 001 179	1	9	0.946
160	1	16	6	M8X70	158 001 180	1	9	0.917
160	1 ¼	16	6	M8X70	158 001 182	1	9	1.030
160	1 ½	16	6	M8X70	158 001 181	1	9	1.038
160	2	16	6	M8X70	158 001 183	1	9	1.042
160	3	10	6	M8X70	158 001 184	1	3	1.376
160	4	10	6	M8X70	158 001 185	1	3	1.548

d (mm)	Rp (inch)	PN (bar)	d1 (mm)	L (mm)	L1 (mm)	H (mm)	H1 (mm)	
*	20	½	16	12	46	77	84	26
*	25	½	16	13	49	79	80	15
*	25	¾	16	13	49	79	80	15
*	32	½	16	14	49	79	80	20
*	32	¾	16	14	62	87	87	20
*	32	1	16	14	62	87	91	20
	40	½	16	21	62	86	91	20
	40	¾	16	21	62	86	91	20
	40	1	16	21	62	86	89	19
	50	½	16	21	62	86	101	20
	50	¾	16	21	62	86	101	20
	50	1	16	21	62	86	101	20
	50	1 ¼	16	21	62	86	101	20
	63	½	16	18	62	101	115	21
	63	¾	16	24	62	101	115	21
	63	1	16	31	62	101	115	21
	63	1 ¼	16	31	62	101	115	21
	63	1 ½	16	31	62	101	115	21
	75	½	16	16	79	123	115	14
	75	¾	16	21	79	123	119	16
	75	1	16	27	79	123	125	19
	75	1 ¼	16	35	79	123	129	21
	75	1 ½	16	42	79	123	129	21
	75	2	16	53	79	123	135	24
	90	½	16	16	87	138	129	14
	90	¾	16	21	87	138	133	16
	90	1	16	27	87	138	139	19
	90	1 ¼	16	35	87	138	145	21
	90	1 ½	16	42	87	138	145	21
	90	2	16	53	87	138	151	24
	110	½	16	15	99	152	169	23
	110	¾	16	20	99	152	169	23
	110	1	16	26	99	152	169	23
	110	1 ¼	16	35	99	152	169	23
	110	1 ½	16	41	99	152	169	23
	110	2	16	51	99	152	169	23
	110	3	6	85	99	152	169	23
	125	½	16	15	101	166	189	24
	125	¾	16	20	101	166	189	24
	125	1	16	26	101	166	189	24
	125	1 ¼	16	35	101	166	188	23

Data sheet

valid from: 10/9/17



d	Rp	PN	d1	L	L1	H	H1
(mm)	(inch)	(bar)	(mm)	(mm)	(mm)	(mm)	(mm)
125	1 1/2	16	41	101	166	188	23
125	2	16	50	101	166	188	23
125	3	6	85	139	178	188	37
125	4	6	90	139	178	188	38
140	1/2	16	18	114	207	209	25
140	3/4	16	24	114	207	208	25
140	1	16	30	114	207	208	25
140	1 1/4	16	38	114	207	208	25
140	1 1/2	16	45	114	207	206	24
140	2	16	50	114	207	207	24
140	3	10	85	142	208	207	38
140	4	10	90	142	208	207	38
160	1/2	16	18	114	226	225	24
160	3/4	16	24	114	226	225	24
160	1	16	30	114	226	225	24
160	1 1/4	16	37	114	226	225	24
160	1 1/2	16	45	114	226	225	24
160	2	16	51	114	226	225	24
160	3	10	85	142	228	225	38
160	4	10	90	142	228	225	38

The technical data are not binding. They neither constitute expressly warranted characteristics nor guaranteed properties nor a guaranteed durability. They are subject to modification. Our General Terms of Sale apply.

Georg Fischer Piping Systems Ltd, Postfach, CH-8201 Schaffhausen/Switzerland

Phone +41 -(0)52-631 1111

e-mail: info.ps@georgfischer.com

Internet: <http://www.gfps.com>