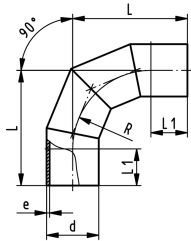




## PROGEF Standard bend 90° S8.3/SDR17.6

### Model:

- Material: PP-H
- Conventional butt-welding according to DVS 2207 part 11
- Production process: segment welded
- Segment-welded fittings have a pressure reduction factor of 0.8



d [mm]	Code	SP	Weight [kg]	R [mm]	L [mm]	L1 [mm]	e [mm]	
450	<b>727 018 551</b>	0	55.400	675	975	300	25,5	
500	<b>727 018 552</b>	0	77.400	750	1100	350	28,4	

The technical data are not binding. They neither constitute expressly warranted characteristics nor guaranteed properties nor a guaranteed durability. They are subject to modification. Our General Terms of Sale apply.

Georg Fischer Piping Systems Ltd, Postfach, CH-8201 Schaffhausen/Switzerland  
Phone +41 -(0)52-631 1111  
e-mail: [info.ps@georgfischer.com](mailto:info.ps@georgfischer.com)  
Internet: <http://www.gfps.com>