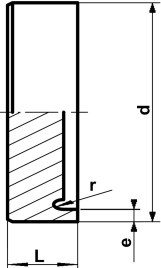




## PROGEF Standard end cap S5/SDR11

### Model:

- Material: PP-R
- Machined
- Conventional butt-welding according to DVS 2207



d (mm)	Code	SP	Weight (kg)	L (mm)	e (mm)
250	<b>727 968 846</b>	1	1.900	60	22.7
280	<b>727 968 847</b>	1	2.600	65	25.4
315	<b>727 968 848</b>	1	3.600	70	28.6
355	<b>727 968 849</b>	1	5.100	80	32.2
400	<b>727 968 850</b>	1	7.200	85	36.3
450	<b>727 968 851</b>	1	10.200	95	40.9
500	<b>727 968 852</b>	1	14.000	105	74.5

The technical data are not binding. They neither constitute expressly warranted characteristics nor guaranteed properties nor a guaranteed durability. They are subject to modification. Our General Terms of Sale apply.

Georg Fischer Piping Systems Ltd, Postfach, CH-8201 Schaffhausen/Switzerland

Phone +41 -(0)52-631 1111

e-mail: [info.ps@georgfischer.com](mailto:info.ps@georgfischer.com)

Internet: <http://www.gfps.com>