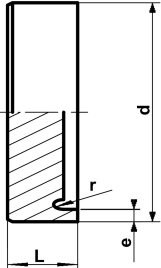




PROGEF Standard end cap S8.3/SDR17.6

Model:

- Material: PP-R
- Conventional butt-welding according to DVS 2207
- Machined



d (mm)	Code	SP	Weight (kg)	L (mm)	e (mm)
250	727 968 821	1	1.600	55	14.2
280	727 968 822	1	2.100	60	15.9
315	727 968 823	1	3.000	65	17.9
355	727 968 824	1	4.200	70	20.1
400	727 968 825	1	6.000	75	22.7
450	727 968 826	1	8.600	85	25.5
500	727 968 827	1	11.600	90	28.3

The technical data are not binding. They neither constitute expressly warranted characteristics nor guaranteed properties nor a guaranteed durability. They are subject to modification. Our General Terms of Sale apply.

Georg Fischer Piping Systems Ltd, Postfach, CH-8201 Schaffhausen/Switzerland

Phone +41 -(0)52-631 1111

e-mail: info.ps@georgfischer.com

Internet: <http://www.gfps.com>