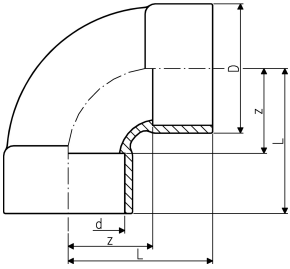




Bend 90° short pattern ABS metric

- >d225 - maximum operating temperature: +40°C

PN (bar)	d (mm)	Code	SP	Weight (kg)	closest inch (inch)	z (mm)	D (mm)	L (mm)
10	225	729 010 120	1	5.741	9	168	256	287
6	280	729 010 122	1	18.000	11	210	318	357
6	315	729 010 123	1	21.000	12	237	356	401



The technical data are not binding. They neither constitute expressly warranted characteristics nor guaranteed properties nor a guaranteed durability. They are subject to modification. Our General Terms of Sale apply.

Georg Fischer Piping Systems Ltd, Postfach, CH-8201 Schaffhausen/Switzerland

Phone +41 -(0)52-631 1111

e-mail: info.ps@georgfischer.com

Internet: <http://www.gfps.com>